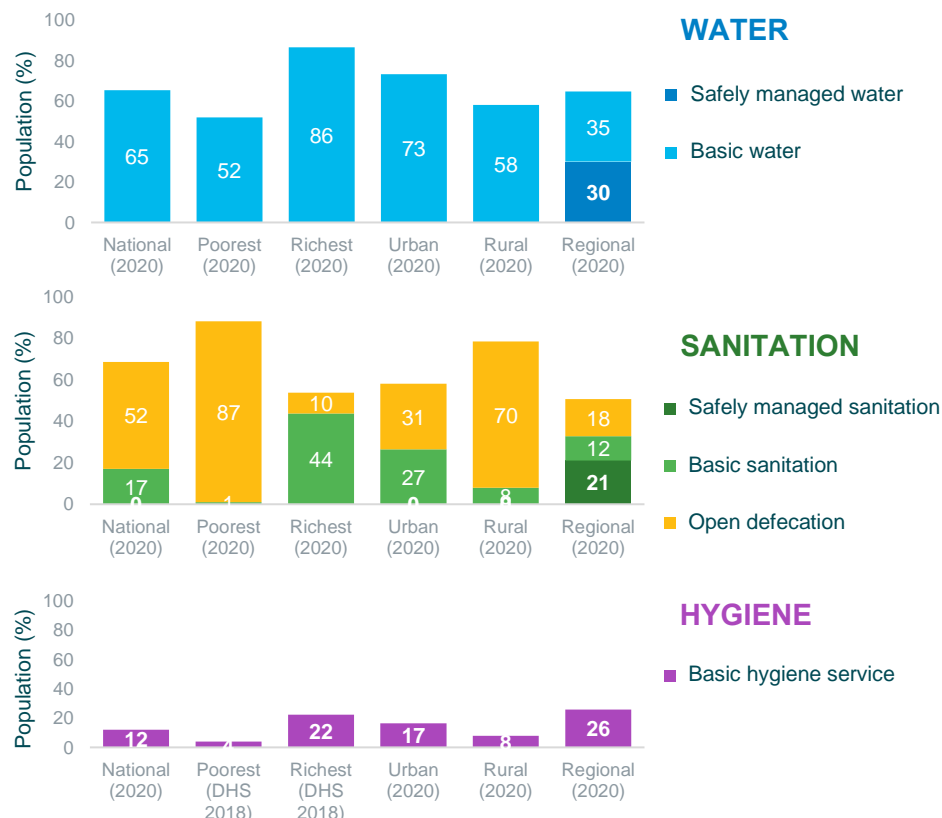


BENIN

STATE OF WATER, SANITATION AND HYGIENE

For a population of 12,120,000 people (2020)ⁱ



Based on available trends:

To ensure 100% safely managed water by 2030, there is an urgent need to frequently measure progress towards SDG 6.1.

To ensure 100% safely managed sanitation by 2030, there is an urgent need to frequently measure progress towards SDG 6.2.

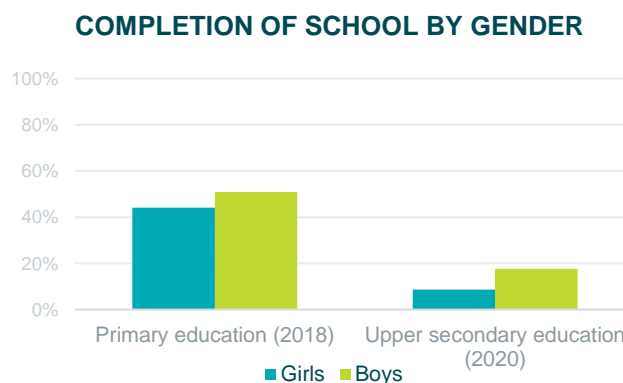
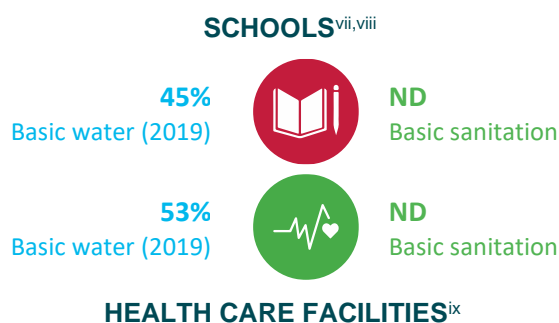
To ensure 100% handwashing facilities with soap by 2030, around 16 times faster progress is needed.

1 in 11 children die under the age of five (9.0% child mortality) each yearⁱⁱ

7238 people die due to lack of access to WASH each yearⁱⁱⁱ

Benin ranks 158 on the Human Development Index.^{iv}

For wealth equality, the GINI coefficient is 47.8. In terms of gender equality^v Benin, ranks 28 in the region and 148 in the world^{vi}



CLIMATE AND SDG 6^{x,x_i,x_{ii},x_{xiii}}

90% of the problems caused by climate change are weather related, which have significant connections to the water cycle and overall availability of water.^{xiv} Since 2000, there have been 12 climate, hydrological and meteorological disasters with an average of 1,224,437 people affected and 94 deaths in the

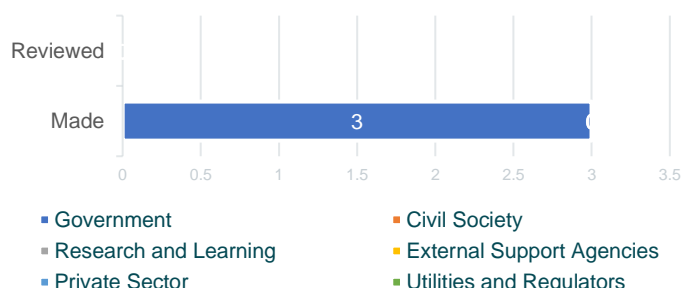
SWA RESULTS FRAMEWORK

Objective 1: BUILD AND SUSTAIN THE POLITICAL WILL TO ELIMINATE INEQUALITIES IN WATER, SANITATION AND HYGIENE

Vulnerable groups: there are government reported measures targeting vulnerable groups for water, sanitation, and hygiene. ^{xv}

Objective 2: CHAMPION MULTI-STAKEHOLDER APPROACHES TOWARDS ACHIEVING UNIVERSAL ACCESS TO SERVICES

COMMITMENTS



Objective 3: RALLY STAKEHOLDERS TO STRENGTHEN SYSTEM PERFORMANCE AND ATTRACT NEW INVESTMENTS

The WASH Budget per capita: ^{xviii} 6.77 USD (2014) Regional average: 7.03 USD (2018) Regional rank: NA (2018)

WASH Budget as % GDP: ^{xix} The WASH budget is 0.72% of the GDP (2014) Regional average: 0.46% (2018)

More can be found in the Collaborative Behaviour Country Profile. ^{xvi}

Economic return: Every dollar invested in the rural poorest quintile has an economic return of 8 dollars in Sub-Saharan Africa.

country attributed to these. Benin is ranked 159 out of 182 countries in regards to its vulnerability and readiness to successfully adapt to climate change. Benin is ranked 140 on the planetary pressures-adjusted HDI (PHDI).

- High level political dialogue leading to commitment and action*
- Connecting with other SDGs for WASH prioritization*

Vulnerable groups targeted are: Populations with a high burden of disease, Poor populations, Internally displaced persons and/or refugees, Populations living in remote or hard-to-reach areas, Populations living in slums or informal settlements, Women

- Government-led multi-stakeholder platforms*
- Mutual Accountability through the SWA Mutual Accountability Mechanism*

Achievements: 0% of the commitments have been achieved. More information can be found on the country page.^{xvi}

Government-led National Reviews: National multi-stakeholder review mechanism exists for: drinking water, sanitation, hygiene. Strengths include: actions based on mutual review and agreed framework. Points to improve: evidenced-based decision making.^{xvii}

- Multi-year and costed finance strategy*
- Resources and policies to reduce inequalities in WASH access*

Absorption of funds committed

	urban sanitation	rural sanitation	urban drinking water	rural drinking water
Domestic	<div></div>	<div></div>	<div></div>	<div></div>
Donor	<div></div>	<div></div>	<div></div>	<div></div>

Less than 50%
 Between 50% and 75%
 Over 75%

REFERENCES

ⁱ Trend figures are derived from JMP estimates and used to calculate the effort required to reach Agenda 2030 goals. JMP estimates are used for national, rural, urban and regional figures as shown. Quintile estimates are used for water and sanitation while the indicated data source and year is used for hygiene figures.

ⁱⁱ UNICEF. Mortality rate, under-5 (per 1,000 live births). . UNICEF_CME_MRY0T4

ⁱⁱⁱ World Bank databank. Mortality rate attributed to unsafe water, unsafe sanitation and lack of hygiene (per 100,000 population). <https://data.worldbank.org/indicator/SH.STA.WASH.P5>

^{iv} UNDRO. Human Development Index.

^v The GINI coefficient is a single number that demonstrates a degree of inequality in a distribution of income/wealth.

^{vi} Gender Inequality Index (GII). <http://hdr.undp.org/en/content/gender-inequality-index-gii>

^{vii} JMP. <https://washdata.org>

^{viii} UNESCO UIS database. Indicators: CR_1, CR_2, CR_1_M, CR_2_M, CR_1_F, CR_2_F

^{ix} JMP. <https://washdata.org>

^x Climate Watch NDC Content 2021. Washington, DC: World Resources Institute. Downloaded: 11/19/2021 0:00.

^{xi} EMDAT 2021. EM-DAT, CRED / UCLouvain, Brussels, Belgium. Country data downloaded: 2021-10-31

^{xii} ND-GAIN 2019. ND-Gain Index of Vulnerability and Readiness. Notre Dame Global Adaptation Initiative, University of Notre Dame.

^{xiii} UNDRO 2019. Planetary Human Development Indicator.

^{xiv} UNISDR 2015. The human cost of weather related disasters 1995-2015.

https://www.unisdr.org/2015/docs/climatechange/COP21_WeatherDisastersReport_2015_FINAL.pdf

^{xv} GLAAS 2018 – 2019. Indicator: A9_a_i_1 Measures to extend services, poor populations – sanitation and A9_b_i_1 Measures to extend services, poor populations - drinking-water. Groups include: Poor populations, Populations living in slums or informal settlements, Populations living in remote or hard-to-reach areas, Indigenous populations, Internally displaced persons and/or refugees, Women, Ethnic minorities, People living with disabilities, Populations with a high burden of disease, Other: senior citizens, terminally ill persons, households with orphans or vulnerable children, widows/widowers and other people without external support.

^{xvi} Additional information can be found on the SWA website by selecting the country page: <https://www.sanitationandwaterforall.org/partners/countries-map>

^{xvii} GLAAS 2018-2019. Joint sector review indicators. Benin

^{xviii} GLAAS 2018-2019. Latest (2016) indicator of WASH budget per Capita (US\$ per capita): D2_budgetPerCap18, D2_budgetPerCap16, D2_budgetPerCap13

^{xix} GLAAS 2018-2019. Latest (2016) indicator of WASH budget per GDP (US\$ per GDP):