

Sanitation and Water for All

High Level Meeting, 23 April 2010

**External Support Agency
Profile 2010**

The Netherlands

Partner, Sanitation and Water for All

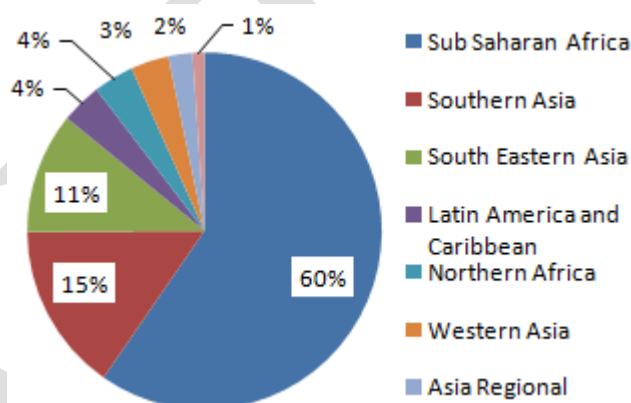
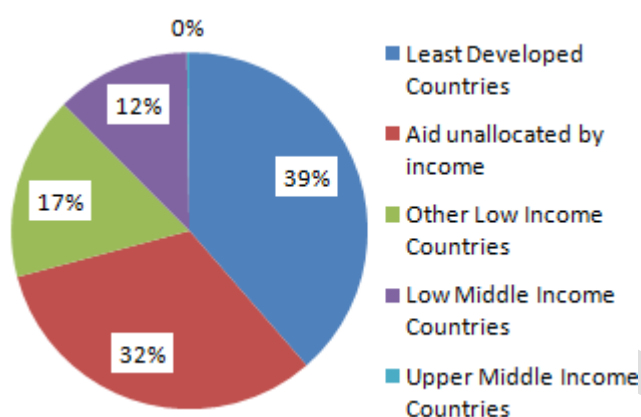
WASH aid policy

Water has been an important component of Dutch development co-operation since 1970s and integrated water resource management forms the core of Dutch development policy. Access to drinking water and sanitation is another key area and Netherlands supports developing countries in achieving MDG 7, as well as in carrying out necessary reforms in the water sector.

WASH aid prioritization criteria

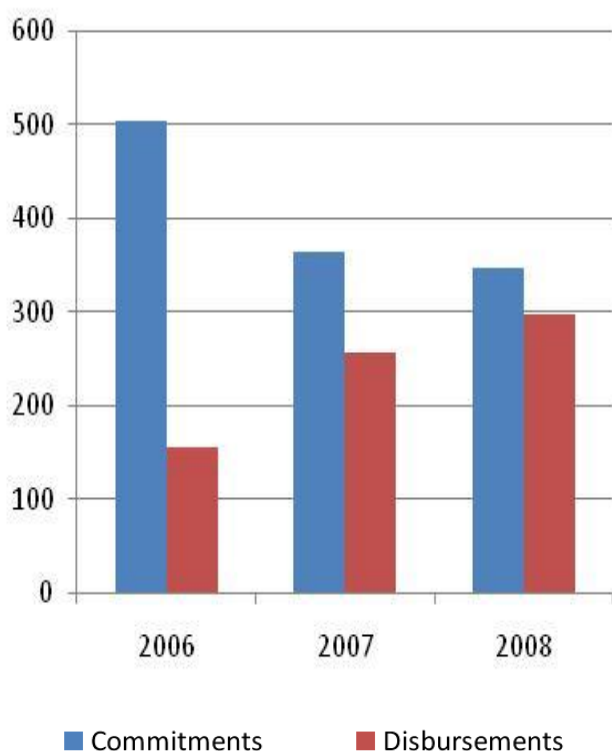
1. Low access
2. Poverty
3. Established in country presence (bilateral aid only)
4. Existence of strong national sector plans or budgets
5. Fragile states, quality of governance

WASH aid priorities: Break up of 3 year commitments (2006-2008) by income group and MDG region



WASH aid commitments and disbursements

Million USD, 2007 constant



Accountability

Specific target

Netherlands announced, in 2005, its aim to provide 50 million people with sustainable access to safe drinking water and sanitation by 2015.

Reporting

A report on MDG realization was placed before the Dutch parliament in March 2009.

Predictability

All WASH aid was allocated in the 3 to 5 year time range. The development assistance budget is expected to shrink over the next three years, leading to a decrease in the amount and predictability of WASH aid. It is anticipated that aid to Middle Income countries will be reduced considerably.

Sanitation and Water for All

High Level Meeting, 23 April 2010

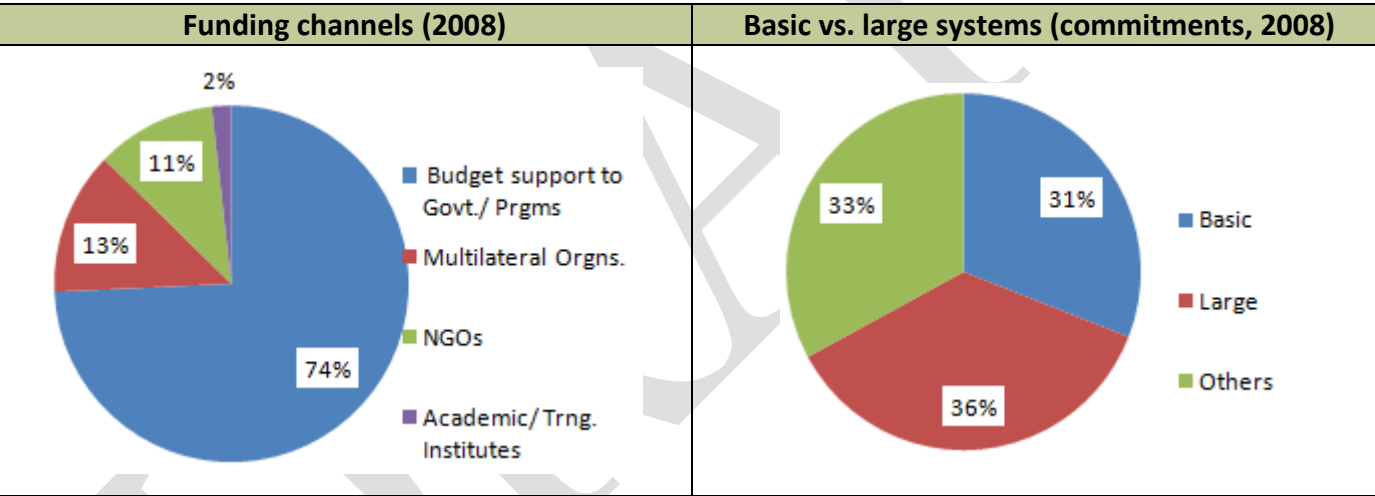
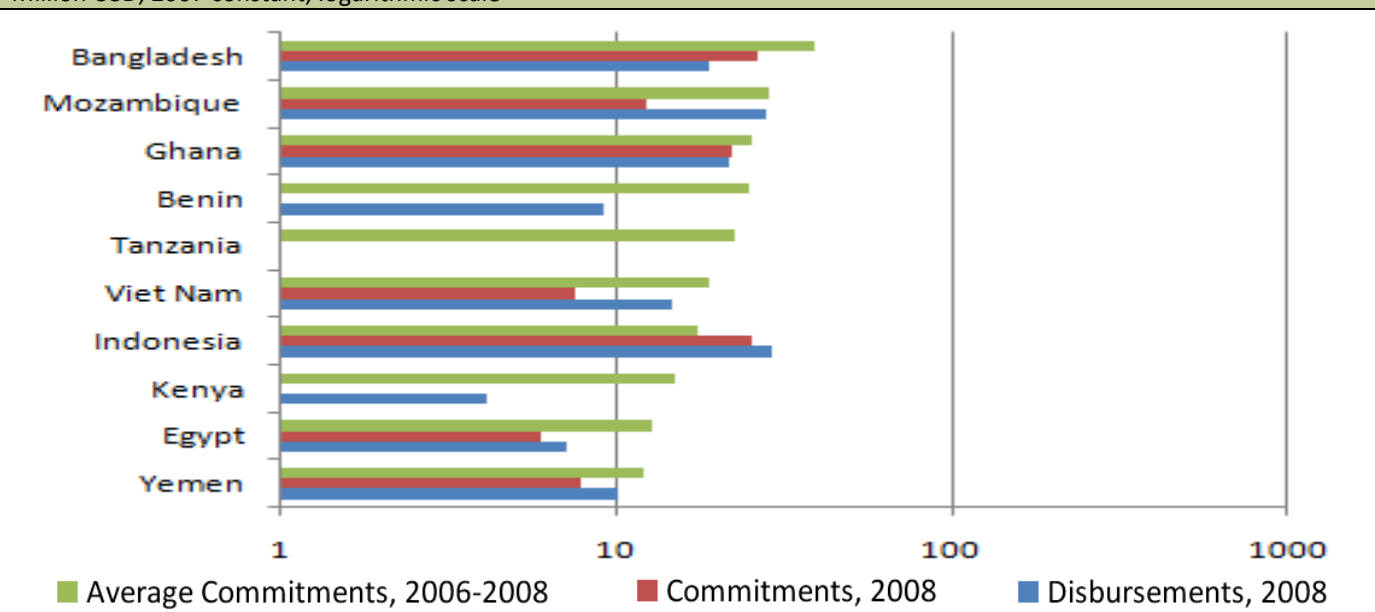
External Support Agency
Profile 2010

The Netherlands

Partner, Sanitation and Water for All

Ten highest WASH aid recipients, ordered by average commitments (2006-2008)

Million USD, 2007 constant, logarithmic scale



Sanitation vs. drinking-water (2008)	Sanitation: 40%	Drinking-water: 60%
---------------------------------------------	------------------------	----------------------------

Alignment and Harmonisation			
Tied vs. untied aid 100% untied	Aid coordinated with country programmes Overall 90%; bilateral, 100%	Use of country procurement systems Normally used; except for aid channeled through multilaterals or NGOs	Use of Project Implementation Units Exist only in case of co-financing arrangements with other donors

The Netherlands is a partner in sector wide programmes in Mozambique, Tanzania and Benin, a part of harmonisation platforms in Bangladesh, Egypt, Yemen, Indonesia and Viet Nam, and leads the donor co-ordination forum in Benin. The Netherlands co-chairs the EU Water Initiative Africa Working Group on behalf of EU member states.